

# North Burnett Regional Council WASTE TRANSFER STATION

## CHANGES TO WASTE DISPOSAL

Council will soon convert Biggenden, Eidsvold, Gayndah and Monto Landfill into Waste Transfer Stations. Your household waste will then be transported to the North Burnett's single landfill site at Mundubbera.

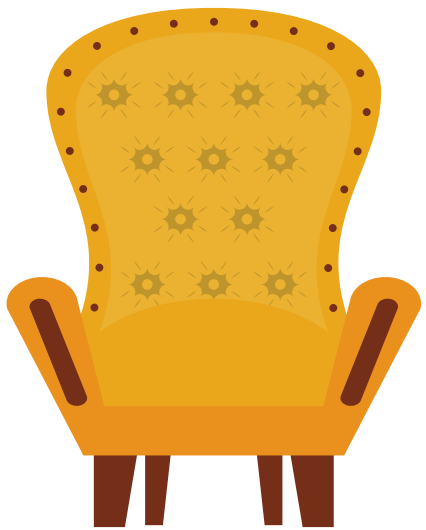
### Here's what this means for community...

#### Disposing Construction and Demolition Waste



- Transfer stations won't have capacity for large amounts of construction and demolition waste. Small amounts will still be accepted.
- This type of waste can be transported directly to Mundubbera Waste Management Facility or to an adjoining local government for disposal.
- The disposal of construction and demolition waste is the responsibility of the developer/builder rather than being subsidised general rates and charges.

#### Disposing of Bulky Items like Furniture



- Like construction and demolition waste, there will not be capacity for very large items at the waste transfer stations.
- A separate skip will be made available at waste facilities for bulky items, such as furniture and mattresses.
- Fees will still apply to dispose of bulky items.
- Council encourages residents to repurpose and recycle items where possible.

#### Recycling Available at our Facilities



- Waste transfer stations are designed to hold residential and commercial waste that will end up as landfill.
- Recycling options are available at the resource recovery areas, please ensure you separate your items accordingly.
- For more information visit Council's website [www.northburnett.qld.gov.au/waste-management](http://www.northburnett.qld.gov.au/waste-management).